

# WIRELESS GATEWAY TECHNICAL DATA



PRODUCTS FOR THE BUILT ENVIRONMENT



[www.tioclimatesolutions.co.uk](http://www.tioclimatesolutions.co.uk)

# WIRELESS GATEWAY

Our gateway is made under license for the TIO brand, in the EU Certificate Number 2107523

## Product Specifications

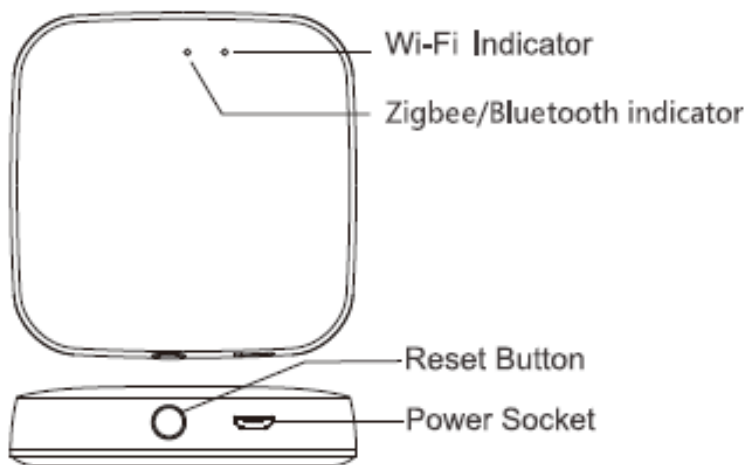
- Product name:** Mini Multi Mode Gateway  
**Power input:** 1A  
**Operating temperature:** -10°C - 55°C  
**Operating humidity:** 10%-90% RH(no condensation)  
**Battery specifications:** Micro USB DCSV  
**Wireless technology:** Wi-Fi 802.11b/g/n  
zigbee/BLE/MESH

## Packing List

- Smart gateway x1
- DC5V power supply x 1 (Optional matching)
- Instruction manual x1
- Power cable x1

## Product Description

Mini multi-mode gateway is the control center of smart devices. It supports zigbee and Bluetooth smart devices. Users can design and realize smart application scenarios by adding smart sub-devices.



## Electronic Information Products Toxic And Hazardous Substances Declaration

Part name	Toxic or harmful substances or elements				
	Lead Pb	Mercury Hg	Cadmium Cd	Hexavalent chromium Cr (VI)	Polybrominated biphenyl PBB
PCB board	○	○	○	○	○
Housing	○	○	○	○	○
Cable	○	○	○	○	○

- O: Indicates that the content of this toxic and hazardous substance in all homogeneous materials of this part is below the maximum limit specified in SJ/T11363-2006 Requirements for Concentration Limits for Certain Hazardous Substances in Electronic Information Products;
- X: Indicates that the toxic or hazardous substance contained in at least one of the homogeneous materials of the part exceeds the maximum limit specified in the SJ/T11363-2006 standard.

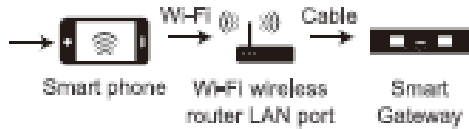


The figures in this label indicate that the product has an environmental protection use period of 10 years under conditions of normal use, and some parts may also have an environmentally friendly use period mark. The environmental protection use period is based on the number indicated by the mark.

# WIRELESS GATEWAY

## Preparation For Use

- ① Mobile phone is connected to 2.4GHz Wi-Fi



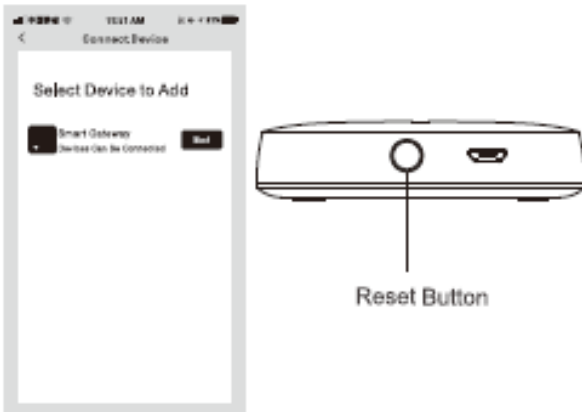
Ensure that the smart phone is within the same Wi-Fi network of the Smart Gateway to ensure an effective connection between the smart phone and the Smart Gateway.

Please open "Bluetooth" and "Location" on mobile.

## Network Settings

- Gateway connects to power.
- After the gateway is powered on, the red indicator flashes, and it is waiting for network connection at this time. If the red indicator does not flash, press and hold the reset button for 10 seconds until the red indicator flashes.
- Make sure that the mobile phone is connected to the 2.4GHz router, and the mobile phone and the gateway are in the same local area network.
- Open the "My Home" page of the mobile App, and a pop-up window will remind you to add a device. Follow the App prompts to complete adding gateway.

## Add Device



- Once the device has been added successfully, you will be able to find the device on the "My Home" page.

## Preparation For Use

- ② Download and open the App

In the App Store, search for the relevant App or scan the QR code on the package/manual to download.

If you are downloading the App for the first time, please tap "Register" to register your account. If you already have an account, please click the "Login" button.



## Network Settings

- If there is no pop-up reminder, click the "+" to add device in the upper right corner of the App, the App will automatically search for the device, and the target device icon to be added appears, click the icon to add device, and follow the App prompts to complete operation.
- Manually add a gateway according to the gateway type, select "Multimode Gateway" on the Gateway Control menu in App. Follow the directions to fill in the router WiFi password and click "confirm indicator blink" to enter the device adding state, and follow the App prompts to complete operation.



TIO Climate Solutions  
c/o H&H Distribution  
Unit X&Y  
The Steventon Depot  
Hanney Road  
OX13 6DJ



[www.tioclimatesolutions.co.uk](http://www.tioclimatesolutions.co.uk)  
01235 242710  
[office@tioclimatesolutions.co.uk](mailto:office@tioclimatesolutions.co.uk)